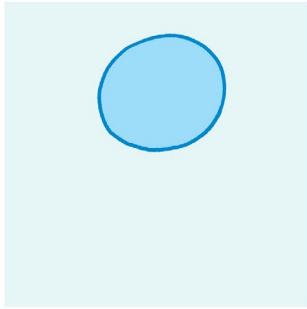




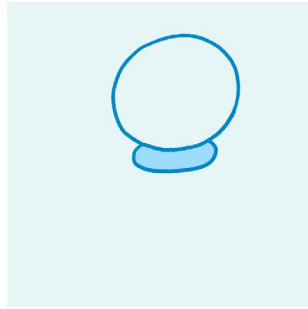
# LEARN HOW TO DRAW **HILDA!** WITH LUKE PEARSON



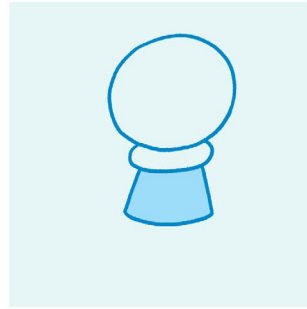
## LET'S START WITH SIMPLE SHAPES



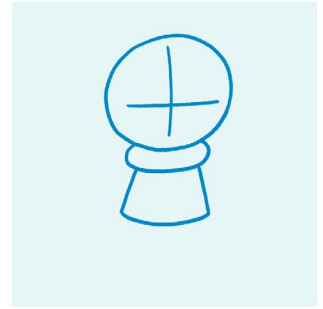
CIRCLE



DONUT UNDER CIRCLE

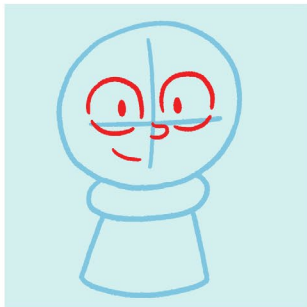


LAMP SHADE SHAPE

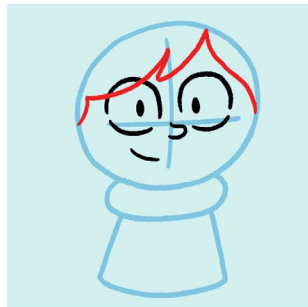


GUIDE LINES

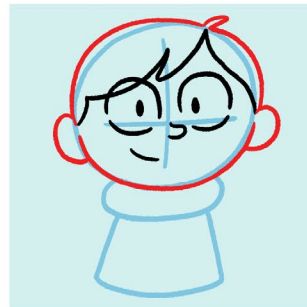
## NOW FOR THE DETAILS!



1. START WITH HER FACE. THERE CAN BE A GAP IN THE EYE LINES



2. SWOOPY LINES FOR HER FRINGE, ONE LINE GOES THROUGH THE EYE



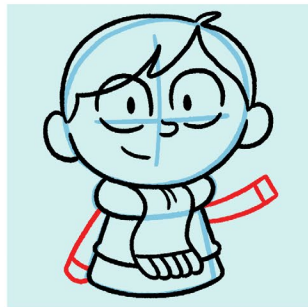
3. DRAW THE OUTSIDE OF HER HEAD AND EARS



4. HER SCARF COMES OUT FROM UNDER HER CHIN



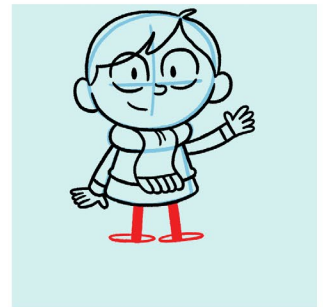
5. DRAW THE REST OF THE CLOTHES, ADD A BUMP AT THE BOTTOM OF THE JUMPER



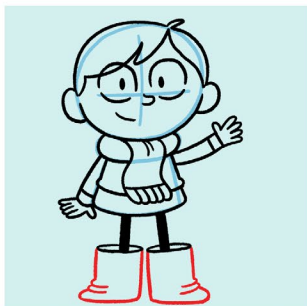
6. GIVE HER ARMS



7. NOW SOME HANDS!



8. HER LEGS ARE STICKS POKING OUT OF TWO OVALS



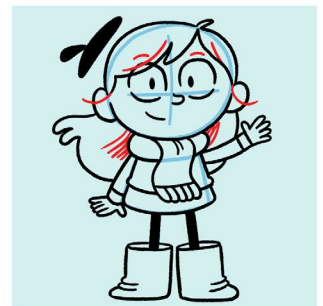
9. DRAW DOWN FROM THE EDGE OF THE OVALS AND GIVE HER TWO MASSIVE BOOTS



10. DRAW IN THE BACK OF HER HAIR, IT USUALLY SWOOSHES TO ONE SIDE



11. HER HAT IS A SEMI-CIRCLE WITH A BIT STICKING OUT, IT'S USUALLY FLOATING

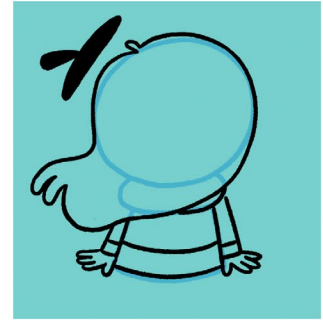
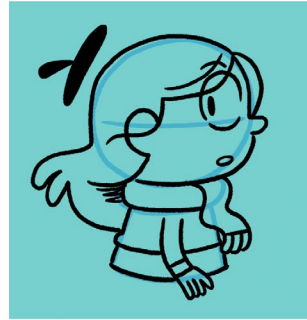
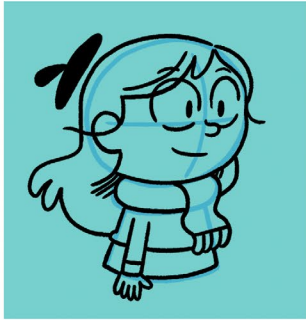


12. ADD SOME EXTRA LINES FOR DETAIL

# LET'S TRY SOME EXPRESSIONS AND ACTION!

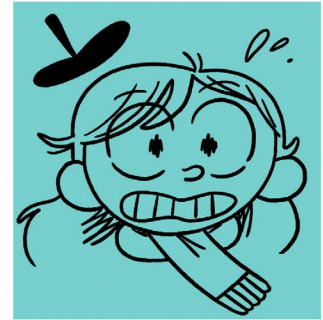
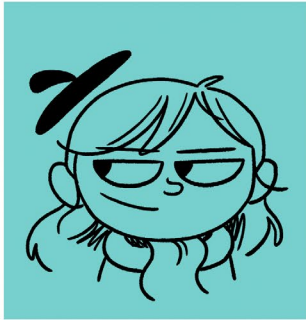
## TURNING

FROM THE **EXACT SAME** BUILDING BLOCKS (CIRCLE, DONUT AND LAMP) YOU CAN DRAW HILDA FROM ANY ANGLE. TRY TURNING HER AROUND!



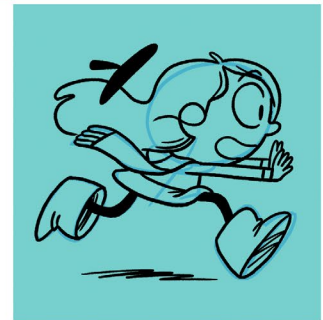
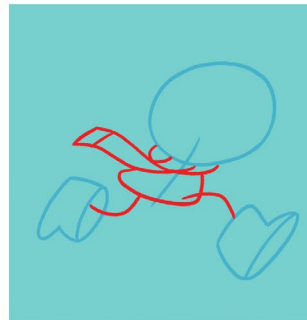
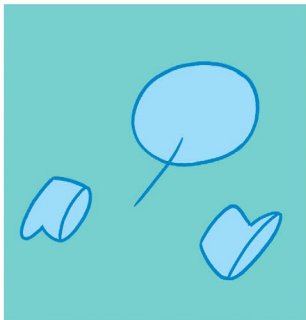
## EMOTIONS

TO SHOW HOW HILDA'S **FEELING** TRY CHANGING THE STYLE AND SHAPE OF HER EYES. YOU CAN ALSO GIVE EMOTIONS TO HER HAT!



## RUNNING

TO DRAW HER RUNNING, THE MOST IMPORTANT PARTS ARE HER **HEAD** AND **FEET**, SO START BY SKETCHING THOSE. HER SCARF FLAPS BEHIND HER WHEN SHE'S GOING FAST.



## DRAWING CHALLENGE- OVER TO YOU!

GREAT JOB **CARTOONISTS!** NOW IT'S YOUR TURN. WHY NOT TRY...

TO MAKE YOUR HILDA DRAWING MORE INTERESTING AND UNIQUE, ASK YOURSELF:

**WHERE IS SHE?**

IS SHE WEARING ANYTHING **UNUSUAL** OR **SPECIAL**?

IS SHE HOLDING ANY ACCESSORIES OR ITEMS?

WHAT CAN YOU COME UP WITH?

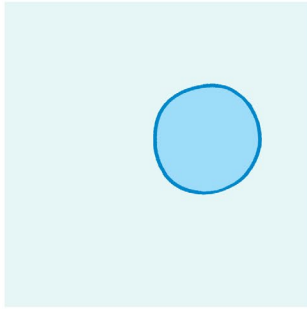




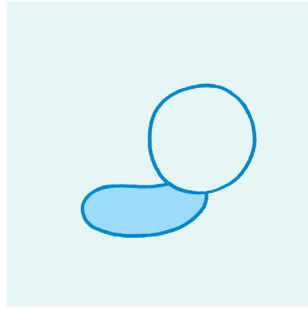
# LEARN HOW TO DRAW **TWIG!** WITH LUKE PEARSON



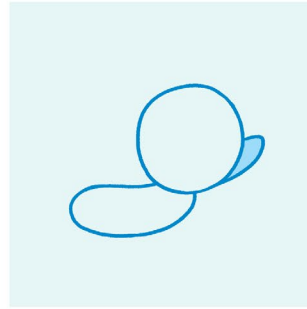
## LET'S START WITH SIMPLE SHAPES



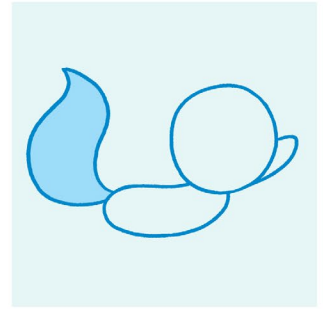
CIRCLE



JELLYBEAN SHAPE

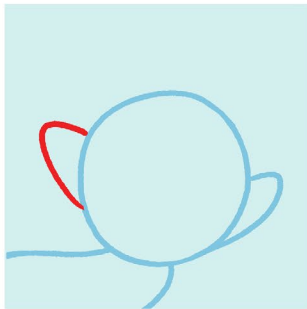


SNOUT POKING OUT OF CIRCLE

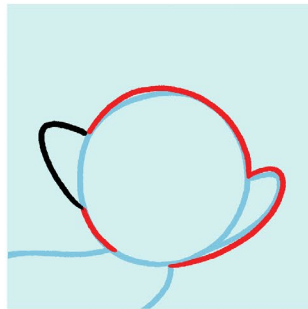


TOOTHPASTE SHAPE

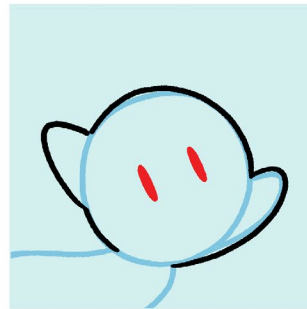
## NOW FOR THE DETAILS!



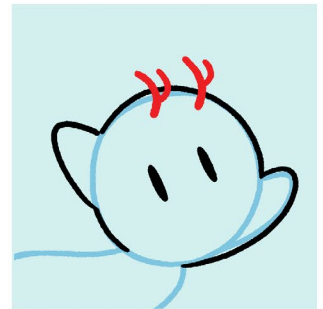
1. START WITH AN EAR, *POINTYISH* BUT WITH A *ROUNDED TIP*



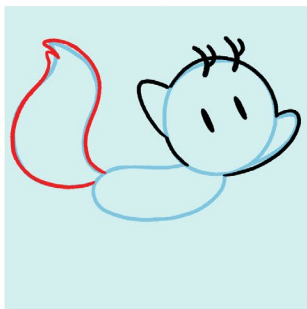
2. FOLLOW THE OUTLINE OF THE CIRCLE AND SNOUT SHAPE TO CREATE THE HEAD



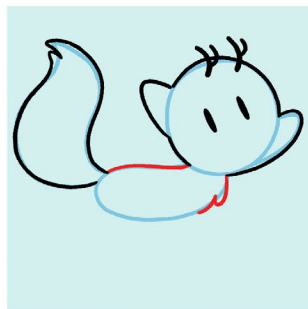
3. THE EYES ARE *LINE*S OR *THIN OVAL*S



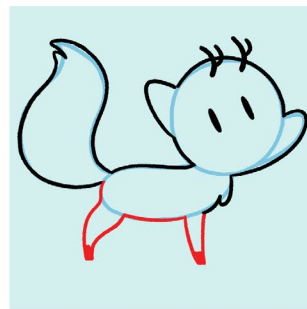
4. EACH *HORN* IS JUST A *LINE* WITH ANOTHER *LINE* *STICKING OUT*



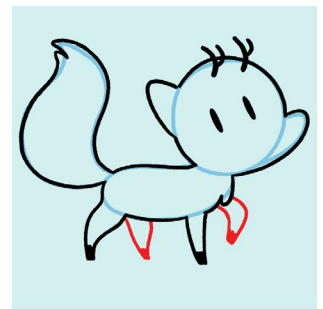
5. FOLLOW THE *TOOTHPASTE* SHAPE, BUT ADD A *LITTLE TUFT* ON THE TIP



6. ADD ANOTHER *LITTLE TUFT* OF *FUR* WHERE HIS *CHEST* IS



7. HIS *LEGS* ARE *SMOOTH* WITH A *BLACK TIP*, HIS *HOOVES* CAN BE *FLAT* OR *SPIKY*



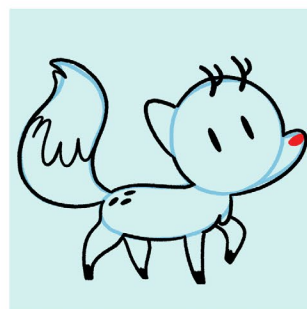
8. LOOK AT *PICTURES* OF *DOGS*, *DEER* AND *FOXES* FOR *IDEAS* ABOUT *LEG* SHAPES



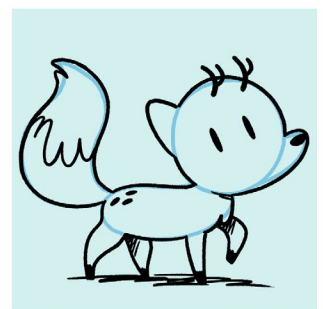
9. A *WAVY, FURRY* *LINE* GOES THROUGH THE *MIDDLE* OF HIS *TAIL*



10. HE HAS *THREE LITTLE SPOTS* NEAR WHERE HIS *TAIL* MEETS HIS *BODY*



11. ADD AN *ADORABLE* *LITTLE* *NOSE*

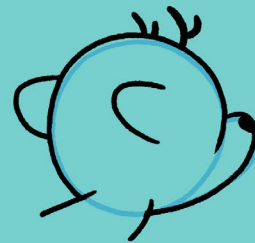
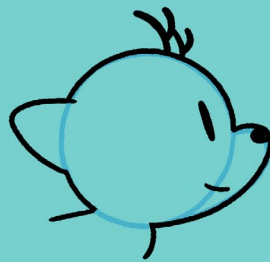


12. ADD A *LITTLE BIT* OF *SHADING* IF YOU WANT TO *GIVE* HIM *MORE* *DEPTH*

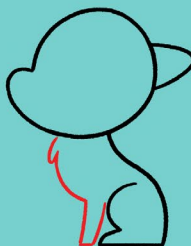
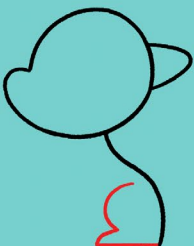
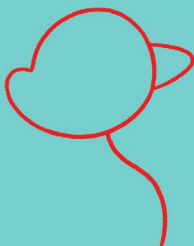
# LET'S GIVE TWIG EXPRESSIONS!

TURNING

YOU CAN USE THE SAME BUILDING BLOCKS TO DRAW HIS HEAD FROM DIFFERENT ANGLES.



SITTING



EMOTIONS

TWIG'S EYES ARE ALWAYS LINES OR NARROW OVALS, BUT YOU CAN ADD DETAILS OR CHANGE THE SHAPE TO SHOW HOW HE'S FEELING. THE SHAPE AND POSITION OF HIS EARS TELL YOU A LOT ABOUT HIS EMOTIONS TOO!



## DRAWING CHALLENGE- OVER TO YOU!

GREAT JOB *CARTOONISTS!* NOW IT'S YOUR TURN.

THINK ABOUT HOW YOU'RE *FEELING*. ARE YOU REALLY *EXCITED* ABOUT SOMETHING (MAYBE YOUR NEW DRAWING SKILLS?) OR ARE YOU *TIRED*, OR *ANNOYED* ABOUT SOMETHING?

CAN YOU FIND A WAY TO MAKE TWIG LOOK LIKE HE'S FEELING THE WAY YOU'RE FEELING?

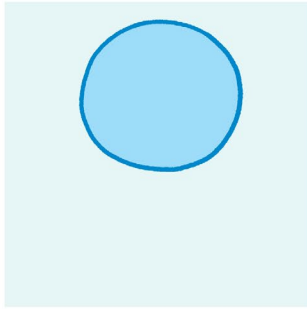




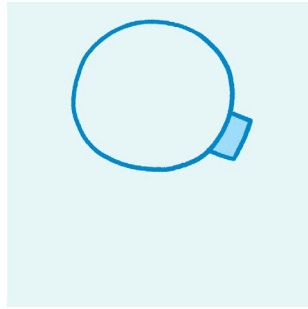
# LEARN HOW TO DRAW WOOD MAN! WITH LUKE PEARSON



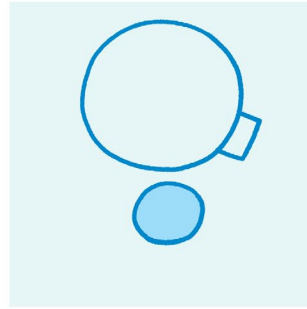
## LET'S START WITH SIMPLE SHAPES



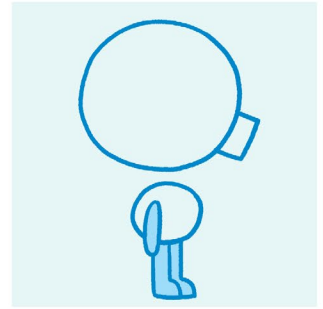
CIRCLE



SHORT STUMPY TUBE

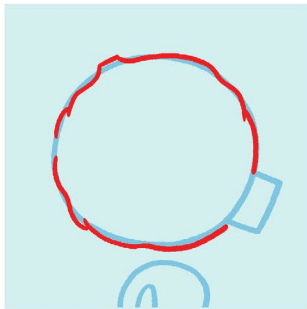


LITTLE CIRCLE

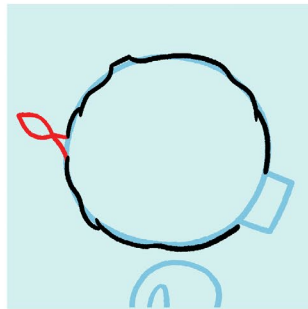


LIMBS

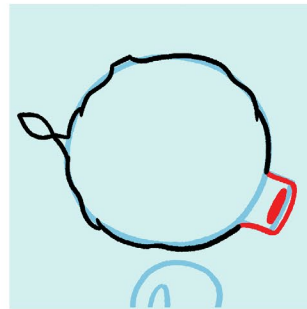
## NOW FOR THE DETAILS!



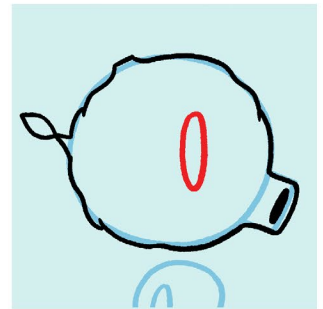
1. DRAW OVER THE CIRCLE MAKING IT SLIGHTLY BUMPY LIKE THE BARK OF A TREE



2. ADD A VERY SMALL BRANCH STICKING OUT OF HIS HEAD WITH A SINGLE LEAF



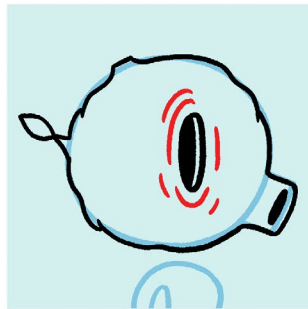
3. DRAW A BLACK OVAL AT THE END OF HIS SNOUT, THIS IS HIS MOUTH HOLE



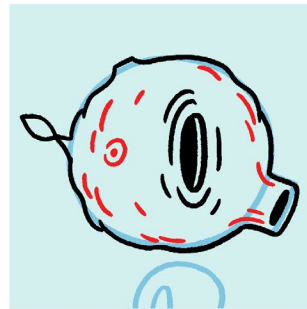
4. HIS EYE IS AN OVAL



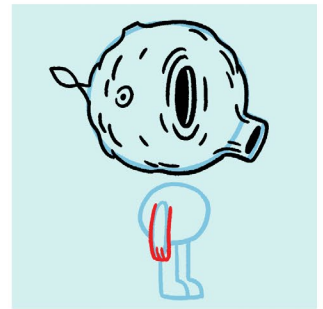
5. FILL MOST OF IT IN, LEAVING A THIN LINE TO SHOW DEPTH, HIS HEAD IS HOLLOW AND EMPTY



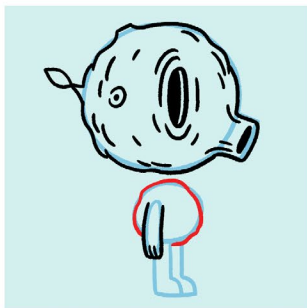
6. DRAW SOME LINES AROUND HIS EYE TO MAKE IT LOOK LIKE THE KNOT OF A TREE



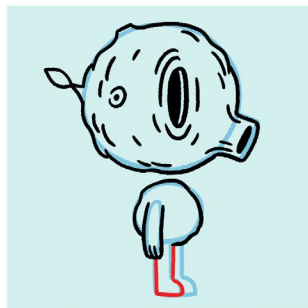
7. ADD DETAILS TO HIS HEAD, LIKE BARK AND WOOD GRAIN. HE'S A LUMPY, BUMPY GUY



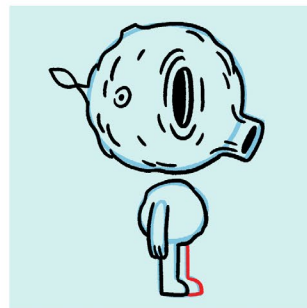
8. GIVE HIM AN ARM AND SOME FINGERS



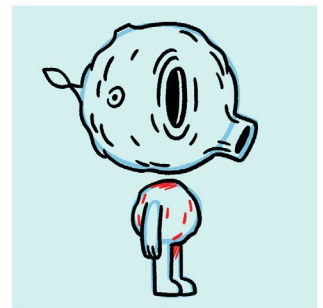
9. DRAW HIS BODY, HE HAS NO NECK AND HIS HEAD FLOATS, NOBODY KNOWS HOW OR WHY!



10. DRAW A LEG



11. DRAW ANOTHER LEG SLIGHTLY BEHIND IT

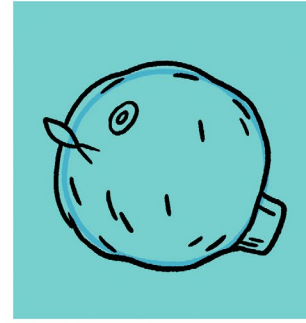
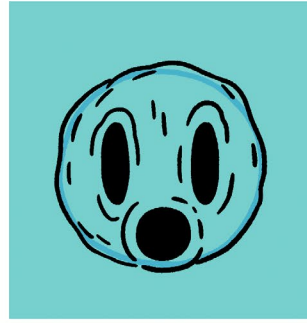
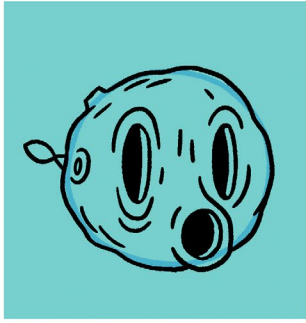


12. ADD SOME DETAIL SO HIS BODY LOOKS LIKE IT'S MADE OF THE SAME STUFF AS HIS HEAD

# SHOWING WOOD MAN'S FEELINGS

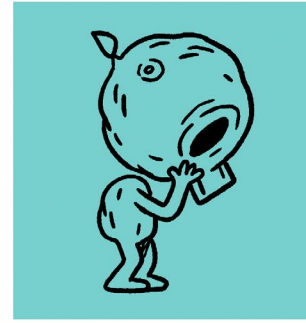
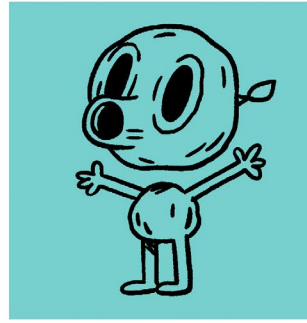
## TURNING

USING A CIRCLE AS A BUILDING BLOCK YOU CAN DRAW HIS HEAD FROM DIFFERENT ANGLES. THE MORE DIRECTLY HE LOOKS AT YOU, THE MORE CIRCULAR HIS MOUTH HOLE IS.



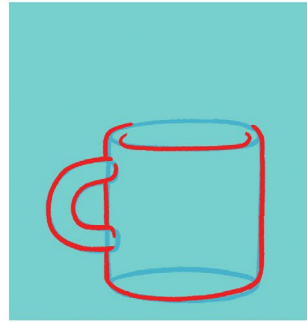
## EMOTION

HIS EYES AND MOUTH ARE JUST HOLES IN SOLID WOOD, SO HIS EXPRESSION NEVER CHANGES. THE ONLY WAY TO SHOW HOW HE'S FEELING IS TO USE BODY LANGUAGE. DON'T TRY AND MAKE HIM SMILE, IT'S WEIRD!



## PROPS

WOOD MAN'S FAVOURITE DRINK IS A MUG OF SOILY WATER WITH STICKS IN. HERE'S HOW TO DRAW IT.



## DRAWING CHALLENGE- OVER TO YOU!

GREAT JOB *CARTOONISTS*! NOW IT'S YOUR TURN.

IT'S HARD HAVING A FACE THAT DOESN'T MOVE. EVEN MORE SO WHEN IT'S MADE OUT OF WOOD. CAN YOU FIND SOME CREATIVE WAYS FOR WOOD MAN TO EXPRESS HOW HE'S FEELING? WHAT KIND OF THINGS WOULD YOU GET UP TO IF YOUR HEAD WASN'T ATTACHED TO YOUR BODY?

