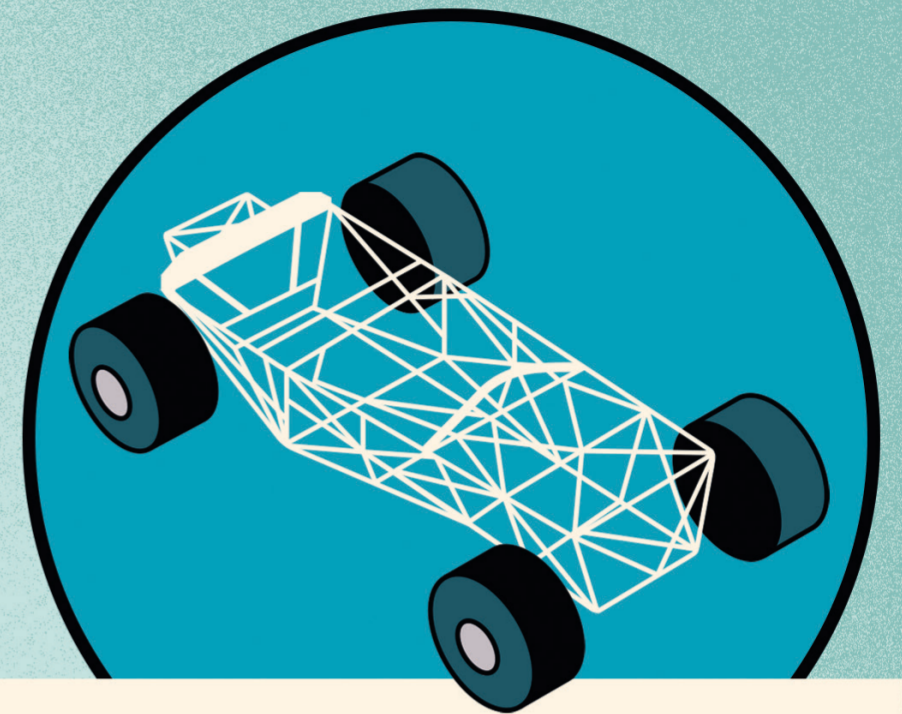


### Camera

Two cameras, one facing forward and the other backward, providing on-board footage.

### Air Box

This allows the engine to suck in air for it to run properly.

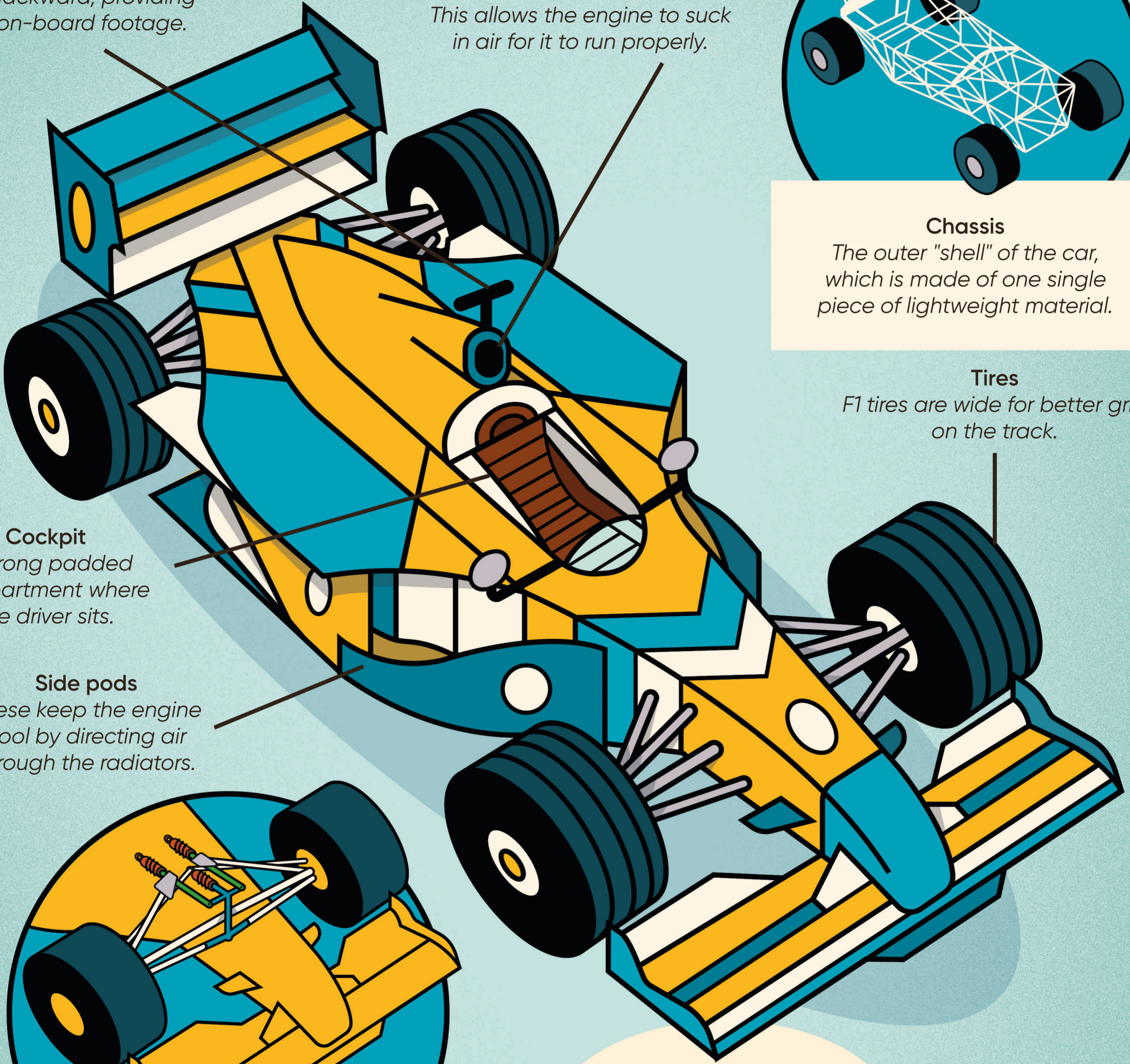


### Chassis

The outer "shell" of the car, which is made of one single piece of lightweight material.

### Tires

F1 tires are wide for better grip on the track.

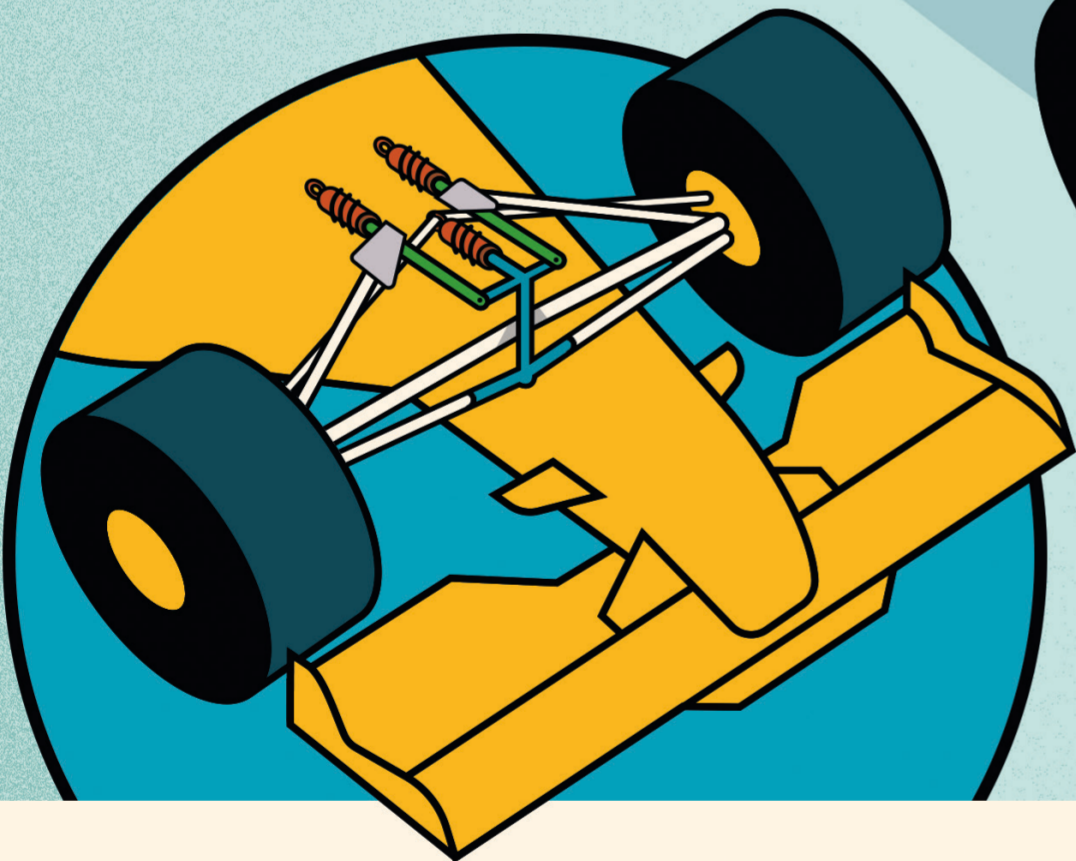


### Cockpit

A strong padded compartment where the driver sits.

### Side pods

These keep the engine cool by directing air through the radiators.



### Suspension

These contain shock absorbers—a series of springs that connect the wheels to the main body and allow the car to move more smoothly and avoid a bumpy ride.

**A REGULAR CAR ONLY HAS 30,000 PIECES, BUT AN F1 RACE CAR HAS 80,000!**

STEMVILLE

# THE FAST LANE

BEN NEWMAN

FLYING EYE BOOKS

